

PLASTIC AUTOMATIC CABLE REELS WITH ELECTRIC CABLE AND SWIVELLING BRACKET

Article	Cable length	Cable type	Power with rolled cable	Power with unwound cable	Inlet	Outlet	Type of socket
078-3420-310	10 m	3GX1,5 mm ² H05VV-F	800 W	2000 W	230 V	230 V	Schuko

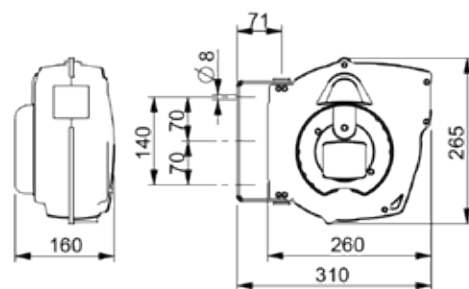


ES-260

Automatic cable reel Mod. ES-260 3GX1,5 | 10 m

- Automatic spring rewinding
- Plastic outer casing
- Steel swivelling wall bracket
- User can stop the cable at the required length
- CE approved
- TÜV approved

078-3420-310	3,800	0,007	1



Article	Cable length	Cable type	Power with rolled cable	Power with unwound cable	Inlet	Outlet	Type of socket
078-3423-315	15 m	3GX1,5 mm ² H05VV-F	800 W	2000 W	230 V	230 V	Schuko

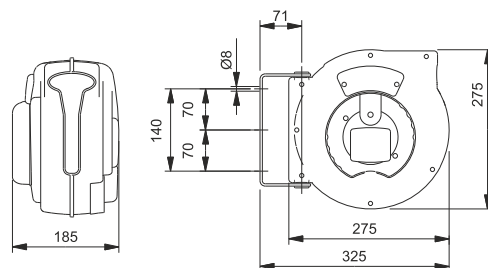


ES-275

Automatic cable reel Mod. ES-275 3GX1,5 | 15 m

- Automatic spring rewinding
- Plastic outer casing
- Steel swivelling wall bracket
- User can stop the cable at the required length
- CE approved
- TÜV approved

078-3423-315	4,500	0,018	1



Article	Cable length	Cable type	Power with rolled cable	Power with unwound cable	Inlet	Outlet	Type of socket
078-3423-410	10 m	3GX2,5 mm ² H07RN-F	1600 W	3000 W	230 V	230 V	Schuko



ES-275

Automatic cable reel Mod. ES-275 3GX2,5 | 10 m

- Automatic spring rewinding
- Plastic outer casing
- Steel swivelling wall bracket
- User can stop the cable at the required length
- CE approved
- TÜV approved

078-3423-410	5,100	0,018	1

